

Technical Bulletin M1590

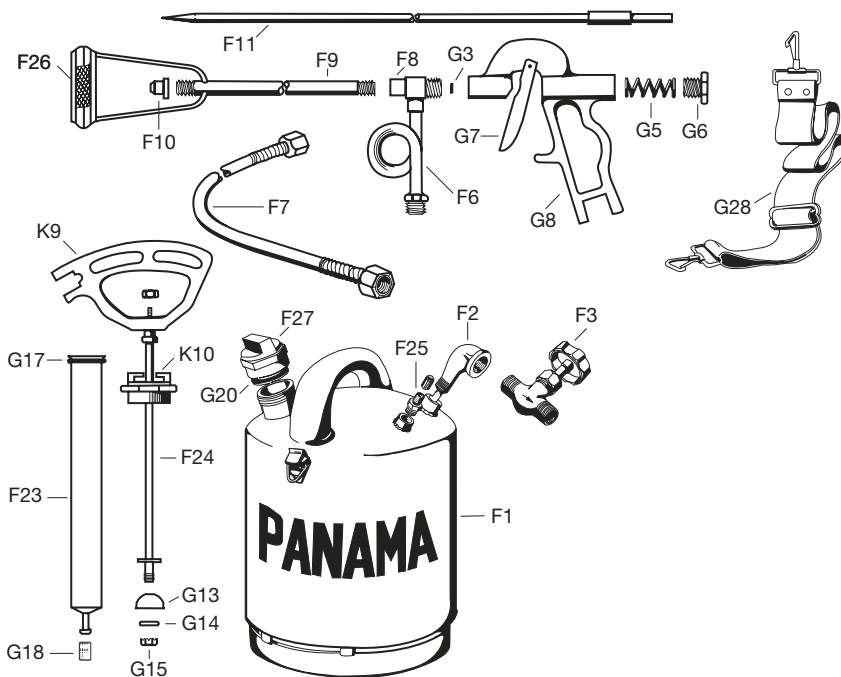
▲ Keep this sheet for your records.

Panama Flame Torch Replacement Parts

No. 83000
Panama Flame Torch



Panama Flame Torch Replacement Parts



Tech Support 800-430-5566

If you need more information or would like advice from an experienced professional, call our Technical Support team.

Sales 800-647-5368

Our sales department will gladly fax you an order form, update you on pricing, or take your order over the phone.

Online

www.forestry-suppliers.com

For credit card and open account orders, visit our web site to place your order.



Forestry Suppliers, Inc.
www.forestry-suppliers.com

205 West Rankin Street
Jackson, MS 39201

Dia. No.	Stock No.	Description
F-1	85310	Tank
F-2	85311	Elbow with Tailpipe
F-3	55370	Needle Valve Cut-Off
F-6	85313	Safety Loop
F-7	55330	Hose (coupled)
F-8	85315	Brass tee
F-9	85316	Extension with Burner
F-10	85317	Nozzle
F-11	85318	Plunger
F-23	85291	Air Pump Barrel (long)
F-24	85292	Stem -11.5" (long air pump barrel)
F-25	85293	Air Valve, complete
F-26	85327	Wicking
F-27	85294	Filler Cap (without air valve)
G-3	55400	O-Ring for tee

Dia. No.	Stock No.	Description
G-5	55420	Spring
G-6	55430	Spring Nut
G-7	55440	Trigger
G-8	55450	Hand Piece Body
G-13	55490	Leather Cup
G-14	55500	Spreader Washer
G-15	55510	Nut
G-17	55530	Large O-Ring
G-18	55540	Valve
G-20	85325	Filler Cap Gasket
K-9	55460	Aluminum Handle
K-10	55470	Pump Nut with lugs
G-19	85324	Filler Cap with air valve (old style)
G-28	55340	Carrying Strap